

Apartment for rent with terrace in l'Eixample, Barcelona

Ref: CM1123

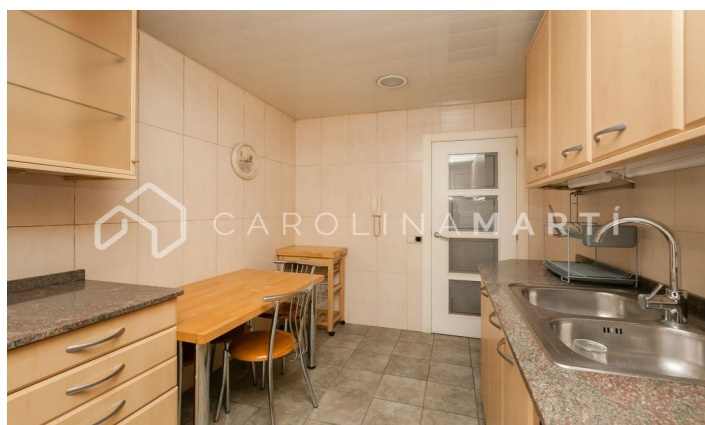


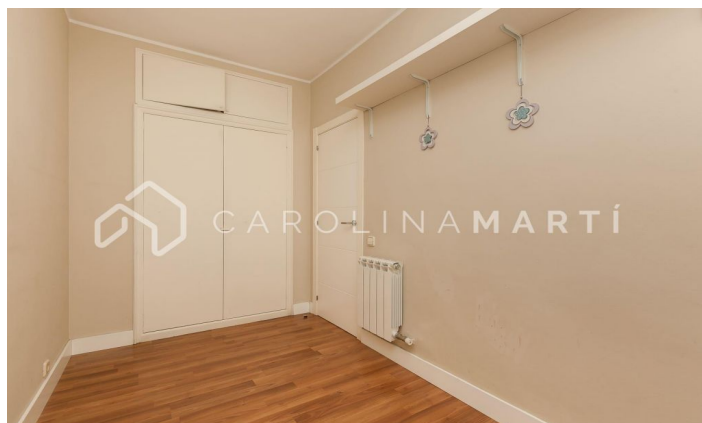
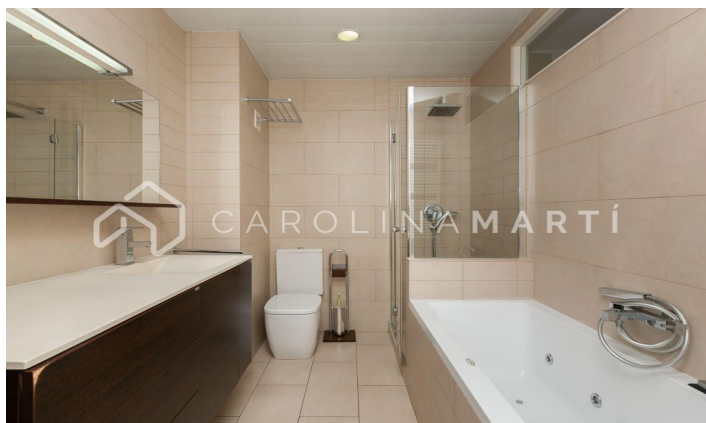
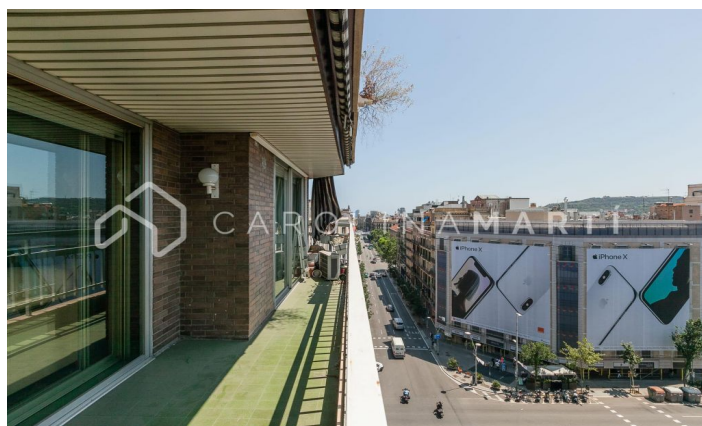
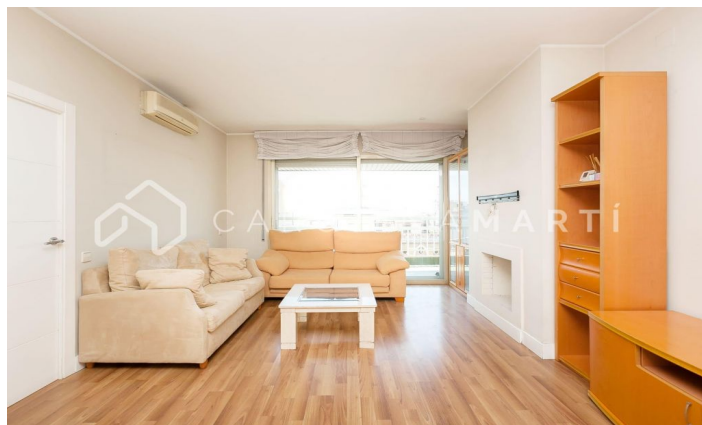
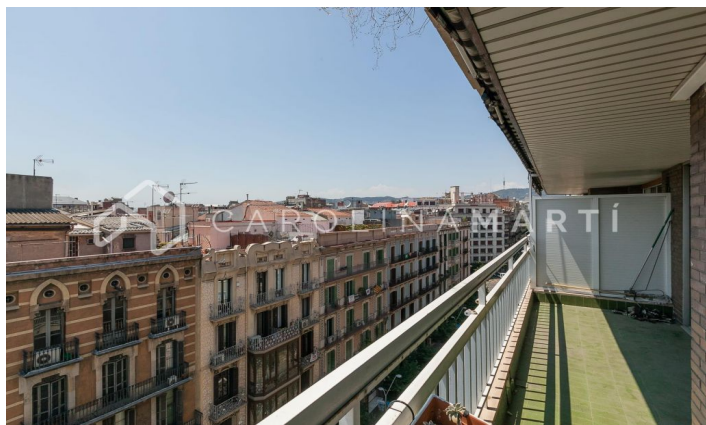
Eixample Dret / Barcelona

Carolina Martí presents this apartment for rent with a terrace, located in l'Eixample, Barcelona. It is located next to Paseo de Gracia, La Pedrera and Casa Batlló. The apartment has a total area of approximately 135 m2 built. The interior is distributed in three bedrooms (two singles with built-in wardrobes and one 'suite' type with a dressing room and a complete bathroom with a bathtub), as well as another complete bathroom with a shower. The apartment is delivered equipped with electrical appliances and furnished with the furniture in the photographs. The spacious living room is exterior to the large terrace with views of the city and the mountains. It is a very bright apartment. It has hot/cold air conditioning and parquet floors. The building was constructed in 1994 and has an elevator. Optional parking in the area. Call us to visit the apartment.

PRICE UPON REQUEST

135 m²
3 Bedrooms
2 Bathrooms
A/C
Heating
Views
Mountain views
Lift
Furnished
Fireplace
Parking
Terrace





Contact us for more information or to arrange a viewing

Tel: +34 93 241 10 95

info@carolinamarti.com

www.carolinamarti.es